

ADW – Industrial Grade



every drop counts...

INTRODUCTION

ADW IG series launched by ENTHU combines years' experience in metering research and development, adopting state-of-the-art technology and sophisticated production. It has been proven that ADW-IG is reliable and absolute matured achievement in high accuracy measurement. In which ADW-IG is designed with single (ADW-IG -S) and multiple (ADW-IG -M) ultrasound principle to match various demands.



In addition, the special compact design does completely assure the quality of water-proof protection. The accuracy is guaranteed even if it is installed under water in a long time. Moreover, the core engineering concept of ADW-IG aims at cutting down the budget on overall operating costs from remote meter readings (AMR).

Difference Between ADW-IG -S and ADW-IG -M

	ADW-IG -S	ADW-IG -M
Material	Cast Iron	Cast Steel
Ultrasonic Channels	Single Ultrasound	Multiple Ultrasound
LCD Display	Standard LCD display	Enlarger LCD display
Bulk Size	DN50-DN150	DN50-DN400

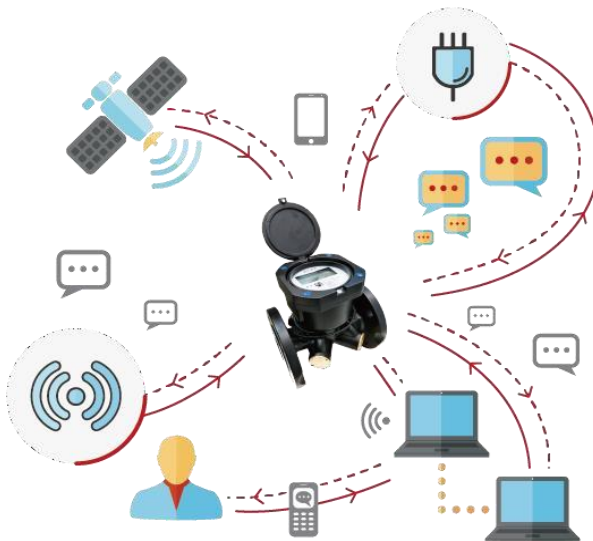
01 No Moving Parts, high accuracy for years' long.

ADW IG offering none moving components in flow sensor, avoid long term abrasion of mechanical parts which may result to inaccuracy measurement and failure of meter. Such design is also resistant to impurities, therefore no-inspections and maintenance cost-free.

02 AMR Ready (wired & wireless)

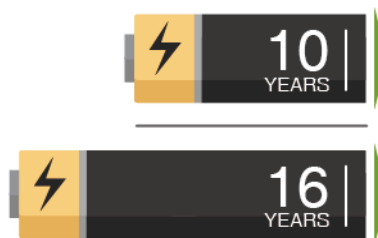
ADW-IG series support multiple communication interfaces for both wired and wireless which suitable for any type of installation environment, e.g. MBus, RS485 (Modbus), Pulse, LoRaWAN (868MHz, 915MHz, 923MHz), NB, Sigfox, etc.

With communication interfaces meter is easily integrated into Automatic Meter Reading (AMR), which provide reliable and scalable network to utility and bring down the meter reading cost for any application.



03 Long Duration Life Time

ADW-IG series has no moving parts, presents IP68 on fully water proof, and its body is fabricated from durable cast iron material and cast steel material. This robust design makes the ADW-IG maintenance-free and highly precise throughout its flexible 10 or 16 years battery life depends upon customers' needs.



04 Support Multiple Application

ADW-IG series has various range in size, ADW-IG -S sized from DN50 (2") to DN150 (6"), and ADW-IG -M sized from DN50 (2") to DN400 (16"). They are capable to be applied from commercial, district to agricultural and industrial applications.

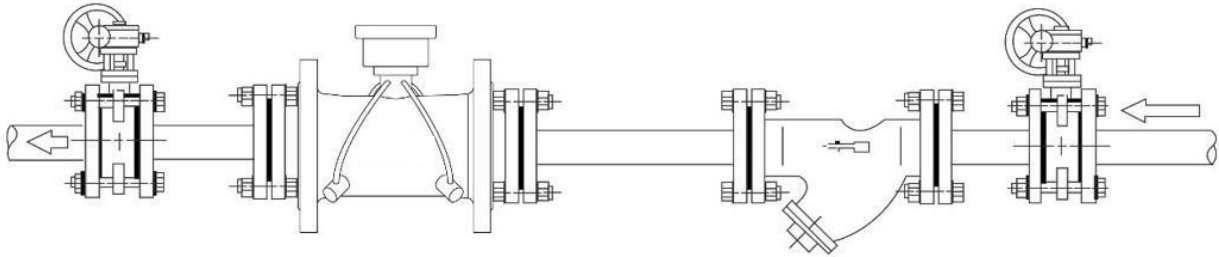
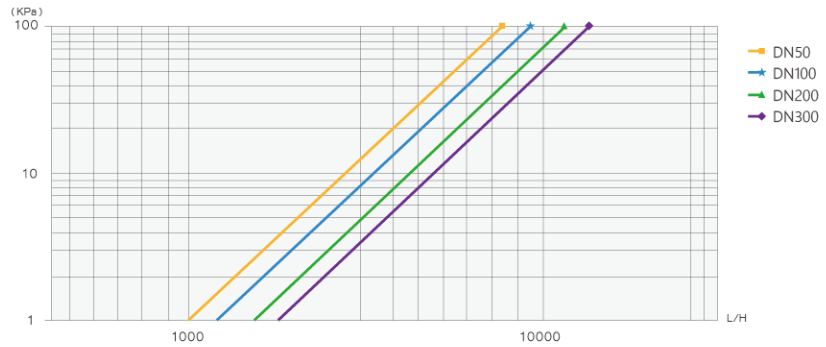
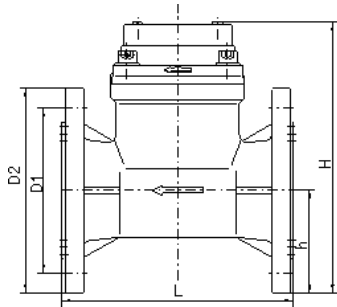
DIMENSIONS

Model	Diameter	Nominal Flow Rate	Transitional Flow Rate	Minimum Flow Rate	Flange Outer Diameter	Length	Connection Bolt
	DN (mm)	Q3 (m³/h)	Q2 (m³/h)	Q1 (m³/h)	mm	mm	
DN50	50	25	0.2	0.125	165	200	4×M16
DN65	65	40	0.32	0.2	185	200	4×M16
DN80	80	63	0.504	0.315	200	225	8×M16
DN100	100	100	0.8	0.5	220	250	8×M16
DN125	125	160	1.28	0.8	250	250	8×M16
DN150	150	250	2	1.25	280	300	8×M20
DN200	200	400	5.12	3.2	335	345	12×M20
DN250	250	630	8.064	5.04	405	445	12×M24
DN300	300	1000	12.8	8	460	500	12×M24
DN400	400	1600	20.48	12.8	580	600	16×M27

TECHNICAL SPECIFICATION

Accuracy Class	Class 2
Range Ratio	R125, R160, R200
Maximum Working Pressure (MPa)	1.0
Pressure Loss	△ P40
Communication Interface	Optical, Mbus, RS485, LoRa, NB-IoT, Sigfox
Medium Temperature Range	0.1°C.....30°C
Ambient Temperature Range	-20°C.....55°C
Environmental Requirement	E1, M1, B
Battery Life	10, 16 years
Protection Class	IP65, IP68
Flow Field Sensitivity	U10/D5, U5/D3 (Optional)
Flow Pipe Material	Cast Steel (M series) / Cast Iron (S series)
Data Storage	24 months data, alarm and alarm time
Installation	Horizontal or Vertical

every drop counts...



Enthu Technology Solutions India Pvt. Ltd.

88 & 89 SSN Square Pudhur,
Peelamedu Pudur,
Coimbatore, Tamil Nadu 641004
Tel No: +91 422 421 7197
E-mail: connect@akvodrops.io

Connect to us,



<https://www.facebook.com/akvodrops/>



<https://twitter.com/akvodrops>



<https://www.instagram.com/akvodrops7/>