

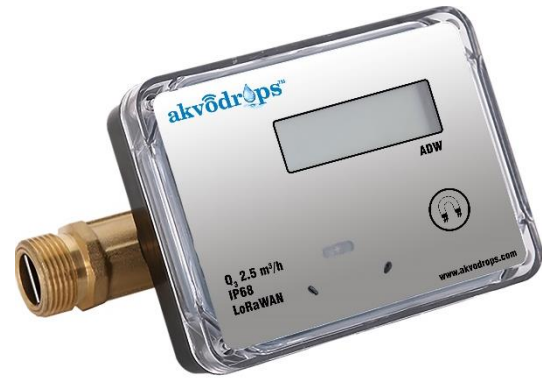
Water Flow Detector - ADW



INTRODUCTION

ADW launched by ENTHU combines years experience in metering research and development, adopting state-of-the-art technology and sophisticated production. It has been proven that ADW is reliable and absolute matured achievement in high accuracy measurement.

In addition, the special compact design does completely assure the qualify of water-proof protection. The accuracy is guaranteed even if it is installed under water in a long time. Moreover, the core engineering concept of ADW aims at cutting down the budget on overall operating costs from remote meter readings.



FEATURES

- Low starting rate (1.5L/h), able to accurate measure Flowrate as low as 0.006m³/h
- Dynamic range (Q₃/Q₁) achieved 400:1 (better than Class D)
- No mechanical moving parts, no abrasives and has a long serving lifetime
- Leak detection
- Pinpoint measuring accuracy
- No measurement of air
- Water Quality Alarm (no precise alarm)
- Transducer scale forming alarm
- Mounting in any installation position
- Support photoelectric, RS-485 and M-BUS output interfaces and provides Radio Frequency and remote meter data reading functions for concentrated management
- Displaying of error and alarm codes.
- Optional battery provision
- Suitable for outdoor installation

TECHNICAL SPECIFICATION

Model	ADW-15	ADW-20	ADW-25	ADW-32	ADW-40
Pipe Diameter	DN15	DN20	DN25	DN32	DN40
Minimum Flow Rate, q_1 (m ³ /h)	0.006	0.01	0.015	0.025	0.040
Transitional Flow Rate, q_2 (m ³ /h)	0.010	0.016	0.025	0.040	0.064
Nominal Flow Rate, q_3 (m ³ /h)	2.5	4.0	6.3	10	16
Connection	G3/4'	G1'	G1 +1/4'	G1 +1/2'	G2'
Length (mm)	165	195	225	180	200
Width (mm)	75	75	75	75	75
Height (mm)	100	100	100	100	100
Temperature	<ul style="list-style-type: none"> • Medium Range: 0.1°C 30/50°C (T30/T50) • Ambient temperature: 5~55 °C • Storage temperature: -20~60 °C 				
Temperature Sensor	A pair of PT1000 platinum resistor				
Metrological Class	Class 2, R=160/250/400:1				
Maximum Operation Pressure	1.6 Mpa				
Pressure Loss	P<63kPa				
Pressure Stage	PN16				
Protection Class	IP65/IP68				
Battery	3.6VDC lithium battery, 6-10-16 years lifetime option.				
Data Storage	24 months history data				
ENVIRONMENTAL REQUIREMENT	Environmental Class: E1, M1, B				
Interface & Communication	<ul style="list-style-type: none"> • M-Bus • RS-485 (optional) • Optical port • LPWAN (LoRa, NB-IOT, Sigfox) (optional) • Pulse output (optional) 				
Installation	Horizontal or Vertical				
Display and Indication	<ul style="list-style-type: none"> • Unit: cubic meter (optional) • LCD: 8-digit 				
Standard Compliance	<ul style="list-style-type: none"> • EN14154 • OIML R49 • ISO4064 				

Enthu Technology Solutions India Pvt. Ltd.

88 & 89 SSN Square Pudhur,
Peelamedu Pudur,
Coimbatore, Tamil Nadu 641004
Tel No: +91 422 421 7197
E-mail: connect@akvodrops.io

Connect to us,



<https://www.facebook.com/akvodrops/>



<https://twitter.com/akvodrops>



<https://www.instagram.com/akvodrops7/>