

Multi Jet Type Water Meter (With Pulse O/P)

Make: EnthuTech
Brand: akvodrops
Model: AD-MJWM



Product Overview:

Multi Jet Type Water Meter with Pulse Output, the epitome of precision and efficiency in water measurement. Engineered for accuracy, this meter delivers reliable readings for commercial and industrial applications. Its pulse output feature enables seamless integration with monitoring systems, facilitating real-time data analysis and management. With a robust design built to withstand varying environmental conditions, it ensures longevity and minimal maintenance requirements. Trust in its excellence for precise water monitoring and control. Upgrade to our Woltman Type Water Meter with Pulse Output and experience unmatched performance in water management.

Reed Sensors:

The reed sensor is designed as a potential-free normally open contact. It is closed with a frequency proportional to the flow rate by a serially integrated magnet within the counter and open itself automatically again. Typical pulse values are 10 L/P and 100 L/P depending on meter size and mounting position. The reed sensor does not require its own power supply and is therefore the ideal partner for all electronic devices which run on batteries.

Salient Features:

- Multi Jet Type Water Meter with Pulse Output
- Pulse value: 10 L/P and 100 L/P
- Precision Measurement
- Extra Dry Dial
- Analog Display
- Inline Type
- High Sensitivity & Low Pressure Loss
- Brass Body for better life
- In-Built Strainers
- High-performance magnetic transmission ensures no part of the register is in contact with water.
- Interchangeable spare parts for easy online maintenance.
- High sensitivity, low-pressure loss
- Additional Strainers are required for easy Maintenance.
- Meter IP Rating: IP68

Accuracy & Class:

- Accuracy: $\pm 2\%$
- Accuracy Class: Class B

Read Switch Electric Data:

- Voltage: 9V DC max
- Current: 0.01 A max

Certifications & Compliances:

- ISO 4064
- IS779:1994 (In Progress)
- ISO/IEC 17025:2017
- 100% of the products are calibrated and all calibration results can be provided on request.

Size Range: 15mm (1/2") to 50mm (2")

Operating Conditions:

- Water In-Line Temperature for cold: $< 45^{\circ}\text{C}$
- Working Temperature 0°C to 60°C
- Working Humidity: 5 to 95% Non-condensing
- Working Pressure: $< 16\text{ bar} / 1.6\text{MPa}$.
- $\Delta P < 0.1\text{ MPa}$

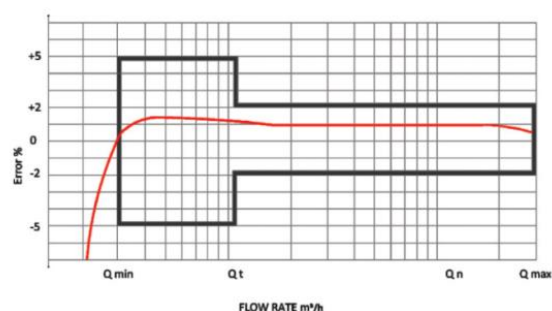
Applications:

- Industries use
- Agriculture applications
- Water supply networks

METROLOGICAL DATA

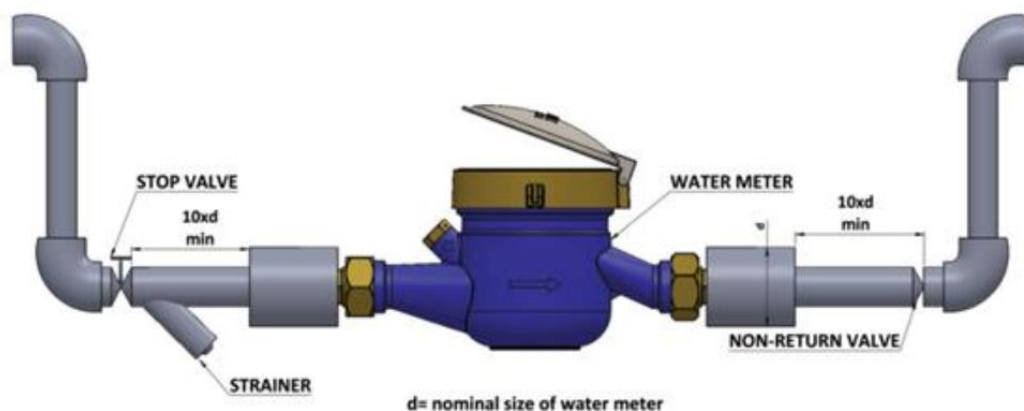
Meter Size (mm)	Class	Q _{max} l/h	Q _n l/h	Q _t l/h	Q _{min} l/h	Max Pressure (Bar)	Min. Reading	Max. Reading
15	B	3000	1500	120	30	16	0.0001	99999.9999
20	B	5000	2500	200	50	16	0.0001	99999.9999
25	B	7000	3500	280	70	16	0.0001	99999.9999
40	B	20000	10000	800	200	16	0.001	99999.9999
50	B	30000	15000	1200	300	16	0.001	99999.9999

ACCURACY CURVE

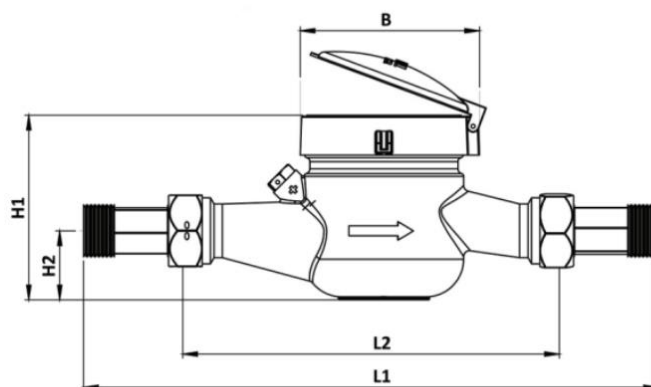
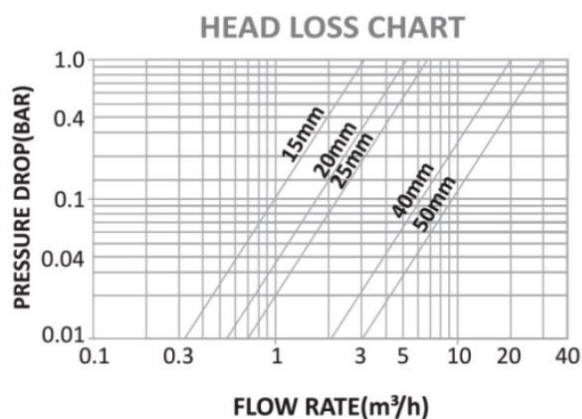


DIMENSIONS

Meter Size (mm)	Length (mm)		B(mm)	H1+H2(mm)	Connecting Thread(DN)
	L1(with nipples)	L2 (without nipples)			
15	250	165	99	104	G 3/4B
20	290	190	99	106	G 1B
25	380	260	104	120	G 1.25 B
40	430	300	125	155	G 2B
50	470	330	125	155	G 2.5 B



U-TYPE INSTALLATION DIAGRAM



Enthu Technology Solutions India Pvt Ltd

Plot No. 32, PMR Layout, 5th Street - Block B,
 Deepa Mill Road, Goldwins, Civil Aerodrome Post,
 Coimbatore, Tamil Nadu, India - 641014